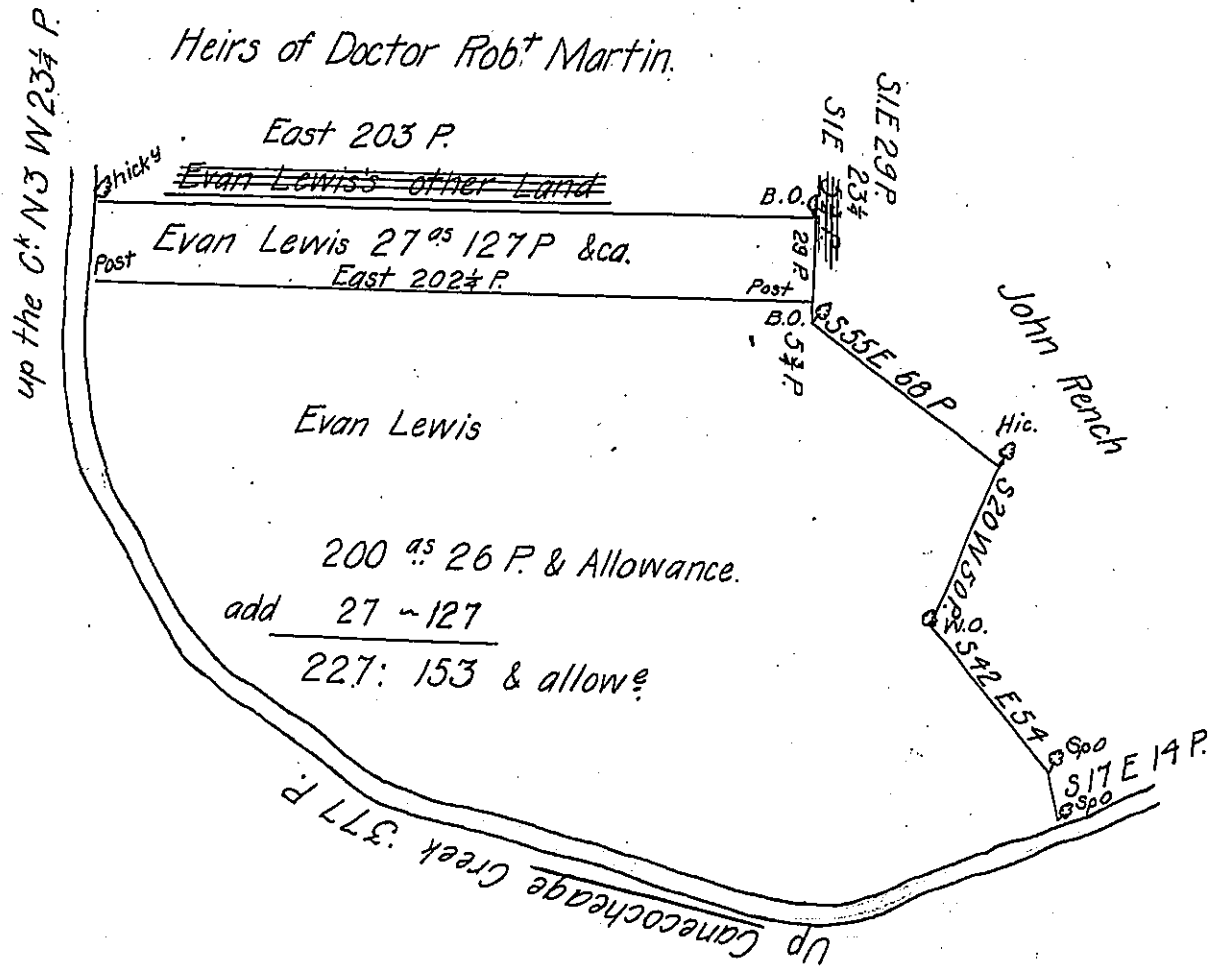


Courses & Distances on the Creek

S 68 W 69 P.
 N 75 W 140
 N 55 W 57
 N 30 W 66
 N 3 W 45

 377 P.
 23 1/4

 total 400 1/4"



A Draft of a Tract of Land Situate in Antrim Township in the County of

Franklin. Containing two hundred Acres and twenty six Perches and the Allowance of Six P Cent for Roads &c. Surveyed October 10th 1790 in pursuance of a Warrant granted to Evan Lewis bearing Date the 18th Day of June 1790.

Matt^w Henderson D.S.

To Daniel Brodhead Esq. }
 Surveyor General. }

200^{1/2} 26 P & allow^e on Warr^t granted Evan Lewis dated 18 June 1790

27 : 127 &c. — D° — — — D° — — — 4" — 1792

227: 153 P & ca.

IN TESTIMONY that the above is a copy of the original remaining on file in the Department of Internal Affairs of Pennsylvania, made conformably to an Act of Assembly approved the 16th day of February, 1833, I have hereunto set my Hand and caused the Seal of said Department to be affixed at Harrisburg, this 14th day of July 1905.

Joac R. Hoover
 Secretary of Internal Affairs.